

Your Health, our Technology



AF2 COMPACT LINE

Washer disinfector for human waste containers



COMPACT LINE

high technology in reduced space

+ OPTIONAL



DWC - Disinfected Water Cooling

Automated system to disinfect the water used in the final rinse to cool down the washing chamber temperature before being flushed, to ensure freedom from microbial contamination, according to the standard EN ISO 15883-1 5.3.2.5.



ETS - Emptying Total System

System to automatically drain water at the end of each cycle from the water pump, the water storage tank and the pipes in order to ensure freedom from microbial contamination inside the machine. According to the standard EN ISO 15883-1 5.3.2.1 & 5.5.1.1



SDS - Self Disinfection System

Function that allows the machine to perform a disinfection program after 24 hours from the last cycle.



DCS - Drain Control System

Safety device that prevents the use of the machine if the drain.



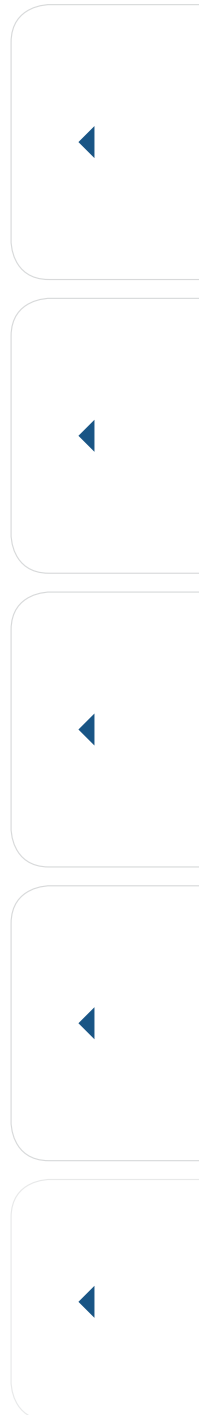
HANDS FREE STARTING

The user can start the machine without removing his gloves by pushing the buttons with his/her elbows. This feature also supports cross infection prevention.



AUTOMATIC DOOR OPENING

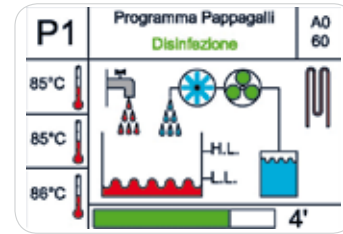
The operator can open and close the door by pushing the foot pedal or activating the optical sensor on the touch panel.





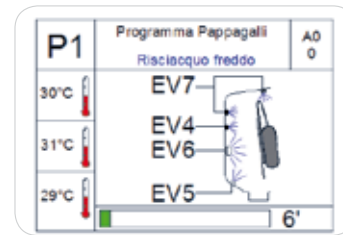
EHMI - Easy Human-Machine Interface

Graphic display for easy communication between machine and user. Top technology display to ensure detailed and clear information during operation and instructions in case of alarm..



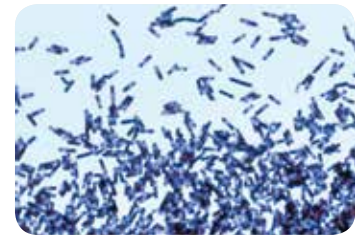
ENC - Electronic Nozzles Control

Intelligent control of water flow, pressure and injection system to improve washing performance.



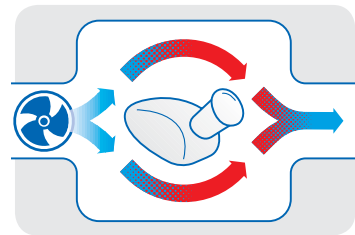
HDS - High Disinfection System

Special ©AT-OS disinfection program with direct spraying appliance against CLOSTRIDIUM DIFFICILE bacterium. Test approved by the German University of Bonn.



ACS - Air Cooling System

After the disinfection phase cold air will be introduced by a fan in the washing chamber, to cool down the temperature, condense the steam and partially dry the disinfected containers. This appliance also prevents the aerosol effect for the operator and the thermodynamic contamination of the room.



AT-OS APP AF2

This userfriendly APP AF2 can be installed on Android smartphones/tablets. It **eases** and **speeds up** the monitoring and programming operating of AT-OS, bedpan washer, also allowing the user to download directly on their Android device PDF/Excel reports.



The Product Range

AF2 COMPACT LINE

Dimension: WxDxH mm



AF2.45P Stand alone

Column floor mounted with plinth and wall or floor drain trap connection. Thermal disinfection with built-in steam generator.

► Dimension 450 x 500 x 1500



AF2.45M Wall-hung

Wall-hung mounted with wall fixing support brackets and wall drain trap connection. Thermal disinfection with built-in steam generator.

► Dimension 450 x 500 x 1500



AF2.686SG

Under-Top floor mounted with plinth. Wall or floor drain trap connection. Thermal disinfection with built-in steam generator.

► Dimension 595 x 600 x 845
with top H = 900



AF2.45IWC Wall built-in with WC

Built-in with assembly frame, completed with small materials for fixing the toilet and drain trap connection. Thermal disinfection with built-in steam generator.

► Dimension 500 x 1550



AF2.45I Wall built-in

Wall built-in with assembly frame. Drain trap connection. Thermal disinfection with built-in steam generator.

► Dimension 500 x 1550

Support and accessories

Bedpans and urine bottles support

Standard Supports

- ▶ Bedpan and urinal
- ▶ Commode and urinal
- ▶ Bedpan with cover and urinal
- ▶ Commode with cover and urinal
- ▶ Multiwasher basket

The urinals are emptied automatically during the closing of the door. It is possible to disinfect up to **3 urinals** per cycle.

Multiwasher Basket

The multiwasher basket is suitable for all kind of items or containers that do not have to be reprocessed in the sterilization department and do not fit on the regular support.



MULTIWASHER BASKET

BASKET FOR SMALL ARTICLES

Opening and closing system

Manual version



Automatic opening with elbow start: version E






Automatic opening: version A



Technical features

• standard |  optional

AF2 Compact Line Bedpan Washer Disinfector	
TECHNICAL FEATURES	AF2 C-LINE
MDD 93-42-EEC, EN ISO 15883-1 and 15883-3 certifications	•
DVGW Certified plumbing system, designed to isolate the potable water pipeline system (water-gap) as prescribed by European Standard EN1717	 •
Manufactured in AISI 304 (DIN 1.4301) stainless steel Scotch Brite finish	•
Washing chamber molded one-piece without welds and with rounded wide radius corners for maximum hygiene	•
USB port for connection to a personal computer for software upgrades	•
Complete with 4 washing programs: - NORMAL for solid waste - ECONOMY for liquid waste - INTENSIVE for tough waste - EXTRA additional custom program	•
Thermal disinfection with a built-in steam generator complete with internal water controlling probe and a safety thermostat	•
A0 value setting between 60 to 6000. The machine displays the A0 value reached and its calculation, in order to allow the user to check the disinfection conditions, according to EN ISO 15883-1/3	•
PT1000 temperature sensor in the washing chamber	•
Softener dosing pump complete with level monitoring in the canister, the softener's dosage can be easily managed via control keyboard	•
Flow-meter for monitoring the correct quantity of chemical liquid used during the cycle. (EN ISO 15883-1 p.4.2.2 - 4.2.3)	•
Detergent dosing pump complete with level monitoring in the canister. The detergent's dosage can be easily managed via control keyboard	
The customers can also choose whether to install one of the following: - Bluetooth module: allows wireless communication between AT-OS device and Android devices (with AT-OS APP AF2 installed) - USB module: to upload dataset firmwares, etc. via USB flash drive	





CSSD

SLUICE ROOM

SERVICE

OP ROOM

AT-OS
DISINFECTION TECHNOLOGY

AT-OS Srl
Viale del Lavoro, 19 - 37030 Colognola ai Colli - Verona - ITALY
Tel (+39) 045 6159411 - Fax (+39) 045 6159422
info@at-os.com | www.at-os.com

